



NEWS RELEASE

Intrepid Metals Mobilizes Drill and Renames Zones at Corral Copper Property in Arizona

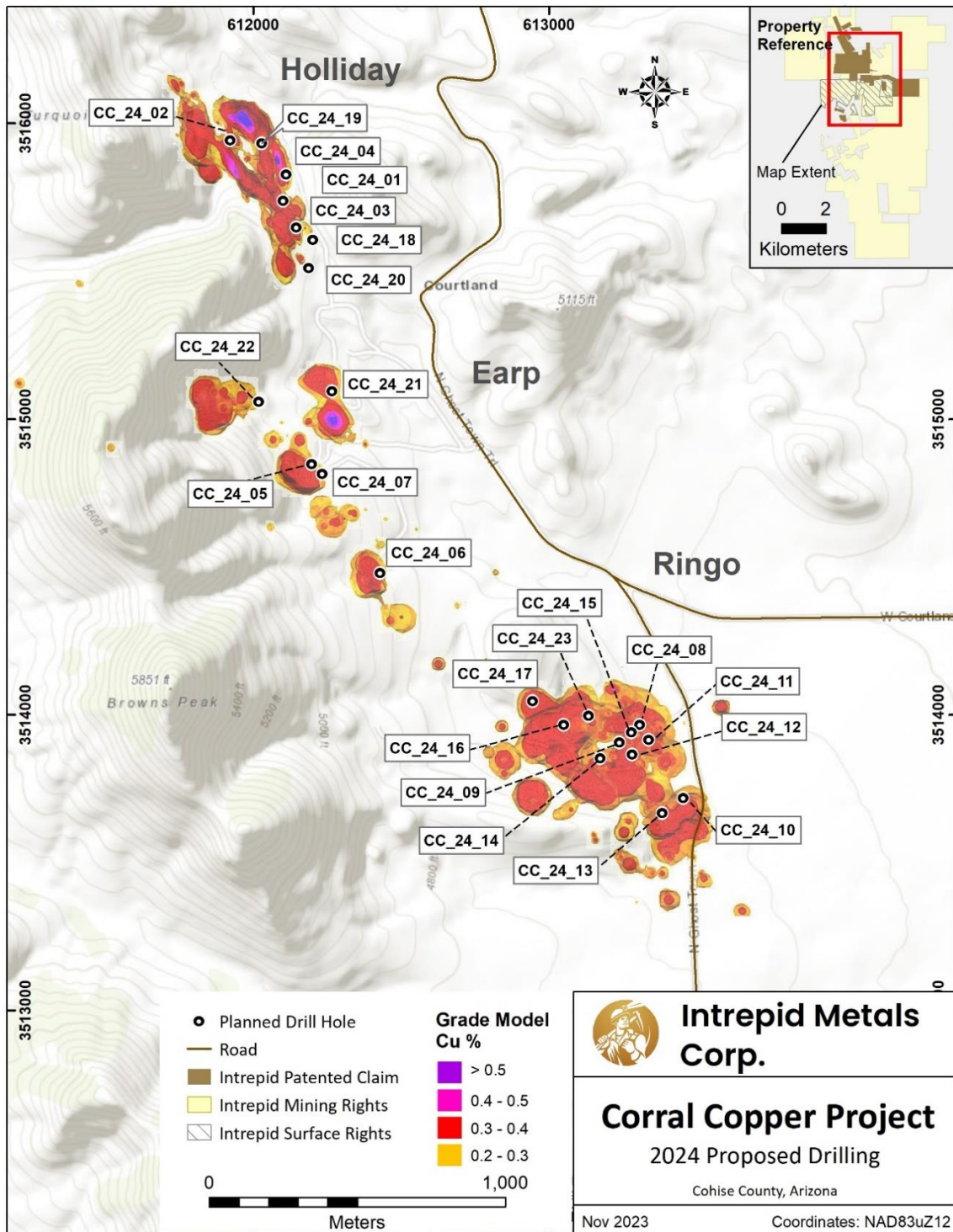
February 9, 2024

(TSXV:INTR) (OTCQB:IMTCF)

VANCOUVER, BRITISH COLUMBIA, Intrepid Metals Corp. (TSXV:INTR) (OTCQB:IMTCF) (“Intrepid” or the “Company”) is pleased to announce that the drill rig for the upcoming initial 5,000 meter (“m”) program has arrived on site at the Corral Copper Property (“Corral” or the “Property”) in Cochise County, Arizona.

“We are excited for the next stage of our growth and to have the drill mobilized to site,” said Ken Brophy, CEO of Intrepid. “After 18 months of consolidating the Property via several different property transactions, we now have 9600 acres and a previously established 3 kilometer trend of impressive copper and gold mineralization within patented mining claims and additional surface rights. After compiling all the historical drill data and most recently completing our \$6.6 million financing, we are well positioned to execute on our initial drill program and excited to have the opportunity to de-risk our Corral Copper Property and build substantial value for Intrepid and its shareholders.”

The 5,000m (23 hole) diamond drill program is expected to start at the Holliday Zone (previously Courtland North), where 7 holes (roughly 1,200m) are planned. The drill program will then continue on to the Earp Zone (previously Courtland South), where 5 holes (roughly 900m) are planned and finally to the Ringo Zone (previously Man), where the final 11 holes (roughly 2,900m) are planned. Please refer to the map below for drill hole locations and new Property Zone names.



The leapfrog model image above is derived from drill results that are historical in nature and based on assay information from independent laboratory Skyline Assayers & Laboratories. Intrepid has not yet undertaken any independent investigation of the sampling nor has it independently analyzed the results of the historical exploration work in order to verify the results. Intrepid considers these historical drill results relevant, as the Company will use this data as a guide to plan future exploration programs. Intrepid also considers the data to be reliable for these purposes; however, the Company's future exploration work will include verification of the data through drilling.

Dr. Chris Osterman, P. Geo, a consultant of the Company, is a Qualified Person ("QP") as defined by National Instrument 43-101. Dr. Osterman has reviewed and is responsible for the technical information disclosed in this news release, including the statements with respect to data verification.

About Corral Copper

The Corral Copper Property is a district scale advanced exploration and development opportunity in Cochise County, Arizona. Corral Copper is located 15 miles east of the famous mining town of Tombstone and 22 miles north of the historical Bisbee mining camp which has produced more than 8 billion pounds of copper. Production from the Bisbee mining camp, or within the district as disclosed in the next paragraph, is not necessarily indicative of the mineral potential at Corral.

The district has a mining history dating back to the late 1800s, with several small mines extracting copper from the area in the early 1900s, producing several thousand tons. Between 1950 and 2008, various companies explored parts of the district, but the effort was uncoordinated, non-synergistic and focused on discrete land positions and commodities due to the fragmented ownership. Intrepid has been able to secure data from various sources which provides a solid foundation in creating geological interpretations and identifying new target areas.

Intrepid is confident that by combining modern exploration techniques with historical data and with a clear focus on responsible development, the Corral Copper Property can quickly become an advanced exploration stage project and move towards development studies.

About Intrepid Metals Corp.

Intrepid Metals Corp. is a Canadian company focused on exploring for high-grade essential metals such as copper, silver, lead, and zinc mineral projects in proximity to established mining jurisdictions in southeastern Arizona, USA. The Company has acquired or has agreements to acquire several drill ready projects, including the Corral Copper Project (a district scale advanced exploration and development opportunity with significant shallow historical drill results), the Tombstone South Project (within the historical Tombstone mining district with geological similarities to the Taylor Deposit, which was purchased for \$1.3B in 2018, though mineralization at the Taylor Deposit is not necessarily indicative of the mineral potential at the Tombstone South Project) both of which are located in Cochise County, Arizona and the Mesa Well Project (located in the Laramide Copper Porphyry Belt in Arizona). Intrepid has assembled an exceptional team with considerable experience with exploration, developing, and permitting new projects within North America. Intrepid is traded on the TSX Venture Exchange (TSXV) under the symbol "INTR" and on the OTCQB Venture Market under the symbol "IMTCF". For more information, visit www.intrepidmetals.com.

INTREPID METALS CORP.

On behalf of the Company

"Ken Brophy"

CEO

For further information regarding this news release, please contact:

Ken Brophy, CEO

604-681-8030

info@intrepidmetals.com

Cautionary Note Regarding Forward-Looking Information

Certain statements contained in this release constitute forward-looking information within the meaning of applicable Canadian securities laws. Such forward-looking statements relate to: (i) future exploration plans and drilling plans including the estimated number of drill holes, meterage and expected commencement date; (ii) the confirmation of historical results; (iii) the Company's confidence in the drill program (iv) details about potential mineralization; (v) the exploration potential of the Corral Copper Property; (vi) building substantial value for Intrepid and its shareholders; and (vii) potential future production.

In certain cases, forward-looking information can be identified by the use of words such as "plans", "expects", "budget", "scheduled", "estimates", "forecasts", "intends", "anticipates" or "believes", or variations of such words and phrases or state that certain actions, events or results "may", "could", "would", "might", "occur" or "be achieved" suggesting future outcomes, or other expectations, beliefs, plans, objectives, assumptions, intentions or statements about future events or performance. Forward-looking information contained in this news release is based on certain factors and assumptions regarding, among other things, the Company can raise additional financing to continue operations; the results of exploration activities, expectations and anticipated impact of the COVID-19 outbreak, commodity prices, the timing and amount of

future exploration and development expenditures, the availability of labour and materials, receipt of and compliance with necessary regulatory approvals and permits, the estimation of insurance coverage, and assumptions with respect to currency fluctuations, environmental risks, title disputes or claims, and other similar matters. While the Company considers these assumptions to be reasonable based on information currently available to it, they may prove to be incorrect.

Forward looking information involves known and unknown risks, uncertainties and other factors which may cause the actual results, performance or achievements of the Company to be materially different from any future results, performance or achievements expressed or implied by the forward-looking information. Such factors include risks inherent in the exploration and development of mineral deposits, including risks relating to the ability to access infrastructure, risks relating to the failure to access financing, risks relating to changes in commodity prices, risks related to current global financial conditions, risks related to current global financial conditions and the impact of COVID-19 on the Company's business, reliance on key personnel, operational risks inherent in the conduct of exploration and development activities, including the risk of accidents, labour disputes and cave-ins, regulatory risks including the risk that permits may not be obtained in a timely fashion or at all, financing, capitalization and liquidity risks, risks related to disputes concerning property titles and interests, environmental risks and the additional risks identified in the "Risk Factors" section of the Company's reports and filings with applicable Canadian securities regulators.

Although the Company has attempted to identify important factors that could cause actual actions, events or results to differ materially from those described in forward-looking information, there may be other factors that cause actions, events or results not to be as anticipated, estimated or intended. Accordingly, readers should not place undue reliance on forward-looking information. The forward-looking information is made as of the date of this news release. Except as required by applicable securities laws, the Company does not undertake any obligation to publicly update or revise any forward-looking information.

Neither the TSX Venture Exchange nor its Regulation Services Provider (as that term is defined in the policies of the TSX Venture Exchange) has reviewed or accepts responsibility for the adequacy or accuracy of this release.